

Name: _____ TP: _____

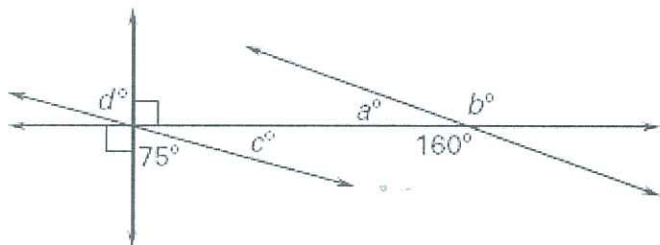
HW#24: Angle Addition Postulate

Geometry

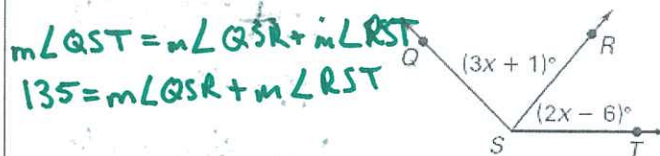
Due Date: Wednesday October 14th

Failure to show all work and write in complete sentences will result in LaSalle!

1. Use the diagram below to find the measure of a° , b° , c° and d° .

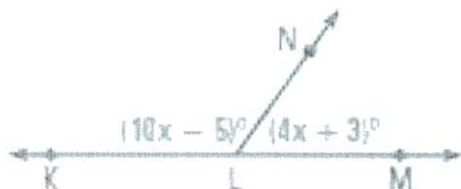


2. Given $m\angle QST = 135^\circ$, find $m\angle QSR$.



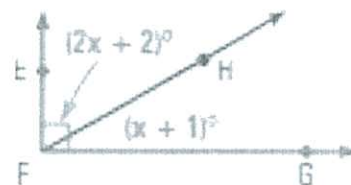
3. Find $\angle KLN$ and $\angle MLN$.

$\angle KLN$ and $\angle MLN$ are supplementary
 $\angle KLN + \angle MLN =$



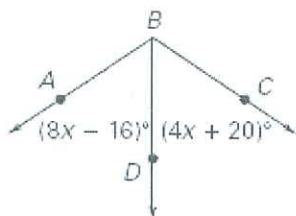
4. Find $\angle EFH$ and $\angle HFG$.

$\angle EFH$ and $\angle HFG$ are complementary
 $\angle EFH + \angle HFG =$



5. BD bisects $\angle ABC$. Find $m\angle ABC$.

What does bisect mean?



6. Draw an angle that fits the description:

a. acute

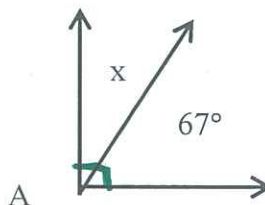
b. obtuse

c. straight

d. right

7. Describe the difference between setting two angles equal and when you would add two angles. When would you use one method, and when would you use the other?

8. If $m\angle A = 90^\circ$ find x .

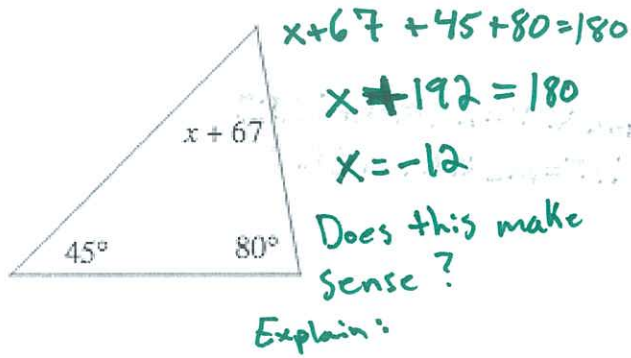


BE YOUR BEST SELF.

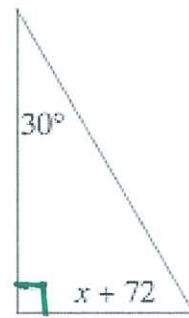
Sum of interior angles in a triangle is 180°

Solve for x .

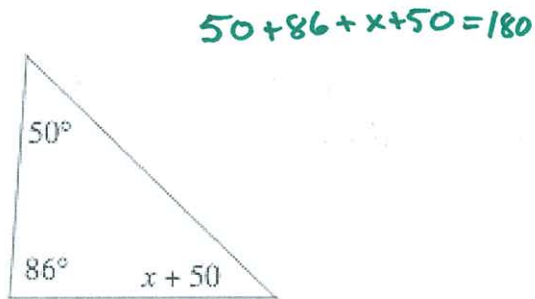
1)



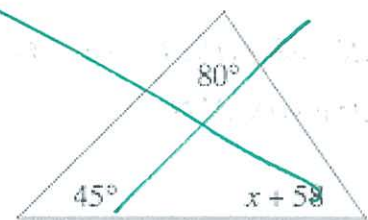
2)



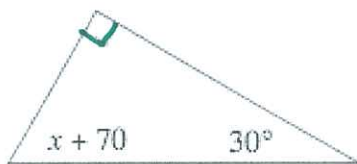
3)



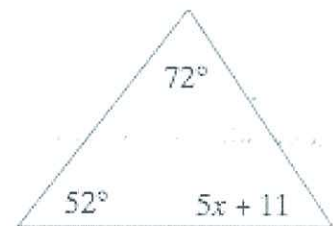
4)



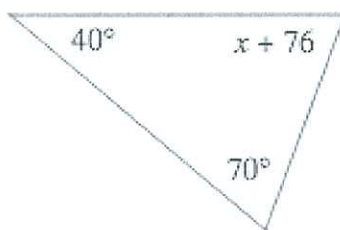
5)



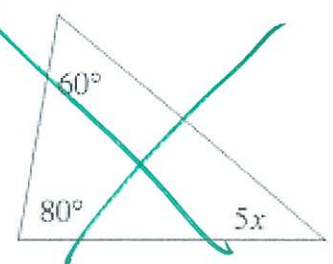
6)



7)



8)



BE YOUR BEST SELF.